

The logo is a circular emblem. The top half is a dark grey semi-circle containing the word 'GLOBAL' in white, bold, sans-serif capital letters. The bottom half is an orange semi-circle containing the words 'NUTRITION' and 'REPORT' in white, sans-serif capital letters, stacked vertically. A thin green line forms the outer border of the circle, and a white line separates the grey and orange sections.

# GLOBAL

Brussels Development Briefing May 20, 2015

# NUTRITION REPORT

[www.globalnutritionreport.org](http://www.globalnutritionreport.org)

- 
- The logo is a circular emblem with a green outer ring. The interior is split horizontally: the top half is dark grey and contains a bulleted list, while the bottom half is orange and contains the text 'NUTRITION REPORT' in white. The entire logo has a subtle drop shadow.
- Assess Progress
  - Identify Actions
  - Improve Accountability

# NUTRITION REPORT

# GLOBAL

- Stakeholder Group
- Independent Expert Group
- 60 authors
- 80+ indicators, 193 countries
- open access data

# Messages

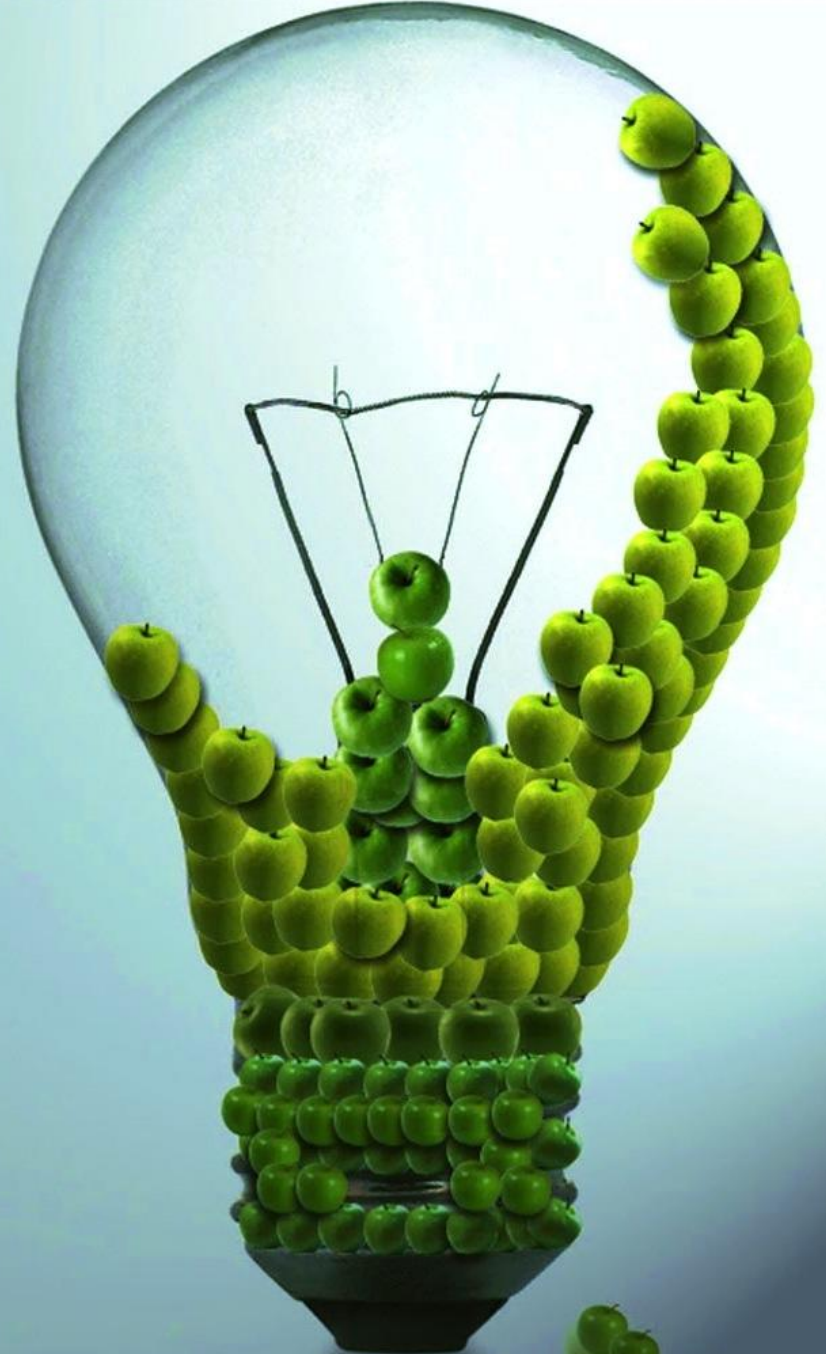
1. Nutrition is a foundation for the SDGs
2. Malnutrition is a concern for all countries
3. Multiple burdens are a “new normal”
4. Progress is slow globally but there are some spectacular country advances
5. We need more ambition on targets
6. Scaling up is more possible than ever
7. Nutrition accountability needs strengthening



**good nutrition**

... is a  
foundation  
for...

**sustainable  
development**





of all  
child  
deaths  
from  
poor  
nutrition



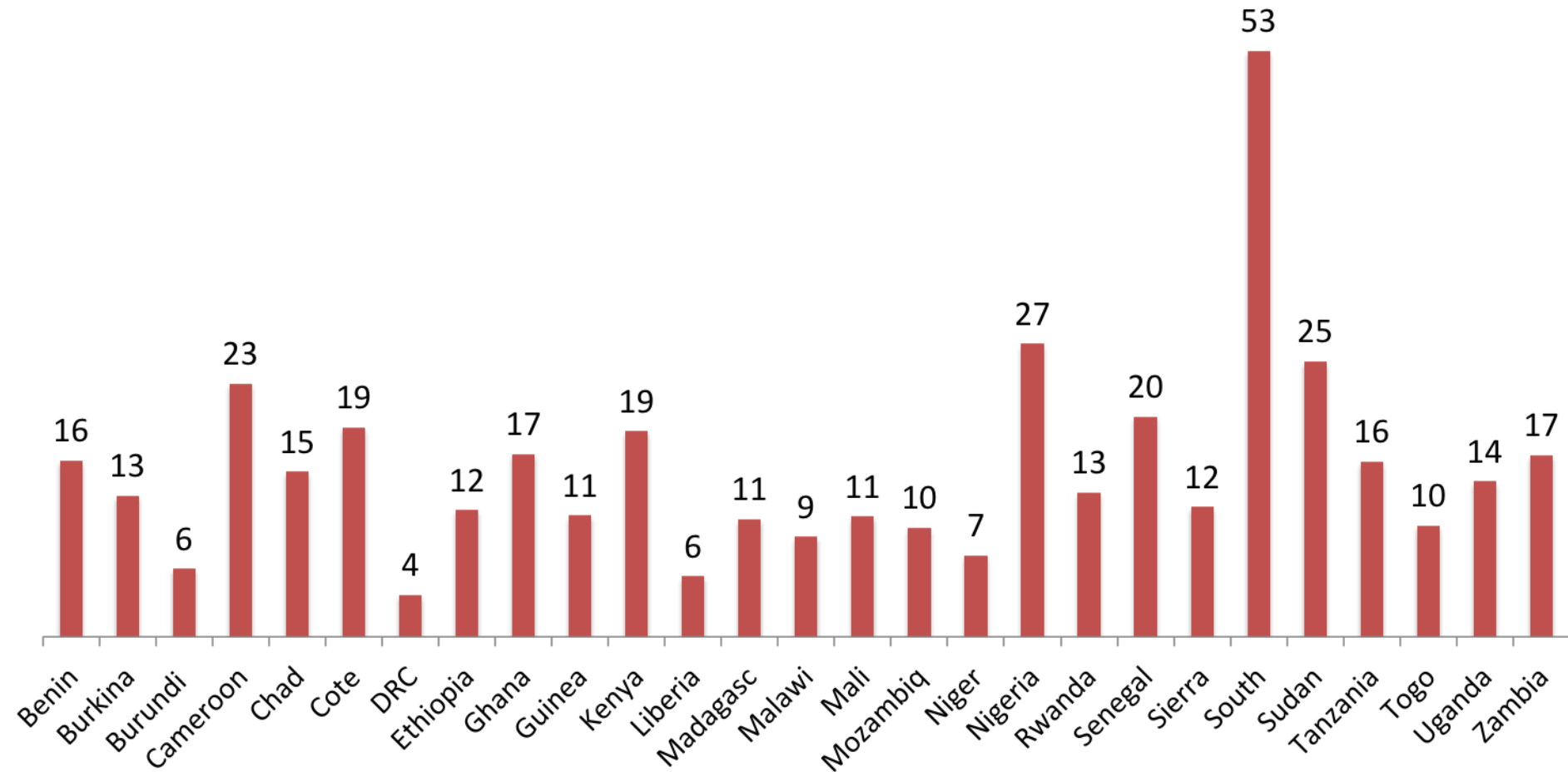
The economics is  
also convincing

\$10

**back** for every \$ invested  
in nutrition programmes

30 year  
compound  
rate of  
interest of  
10%

# Dollars returned for \$1 investment in scaling up nutrition specific interventions



Expanded set of country estimates, based on methodology in Hoddinott et. al. 2013

Benefit-cost ratios for different countries of scaling up the set of nutrition specific interventions in Bhutta et. al. 2013.



# Good nutrition supports intergenerational equity



But.... the number of times  
**nutrition** is mentioned in **169**  
SDG targets?

uno

one

واحد

**un**

[www.globalnutritionreport.org](http://www.globalnutritionreport.org)

we need to **intensify** efforts to embed  
nutrition more broadly in the SDGs

# Whichever way you look at the world...



## ...malnutrition affects **every** country



# The “New Normal”

45%

of countries are  
dealing with  
undernutrition &  
overweight/obesity

...we need to see  
malnutrition in  
multiple  
dimensions



# The world is off course

- Stunting
- Wasting
- Overweight
- Anemia
- Low birth weight
- Low exclusive breastfeeding



But.. a number of **countries**  
are **on course**  
for the WHA targets

**69** – one or more targets

**31** – none of the targets



countries are  
making great  
strides  
forwards..

## **U5 Stunting**

Bangladesh, Cambodia,  
Ethiopia, India, Lesotho,  
Nepal, Yemen

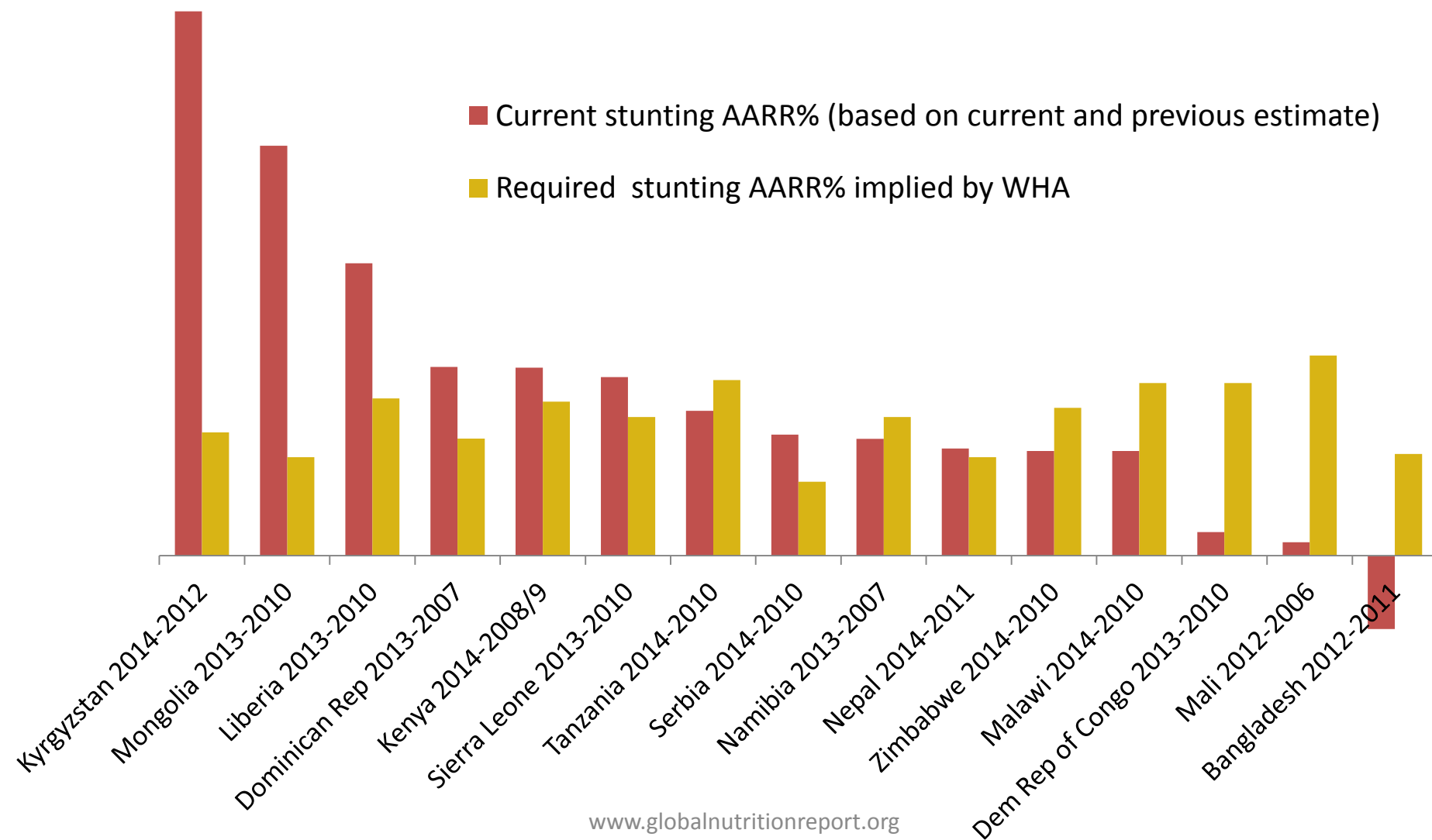
## **U5 Overweight**

Azerbaijan, Benin,  
Egypt, Indonesia,  
Kazakhstan, PNG,  
Sierra Leone

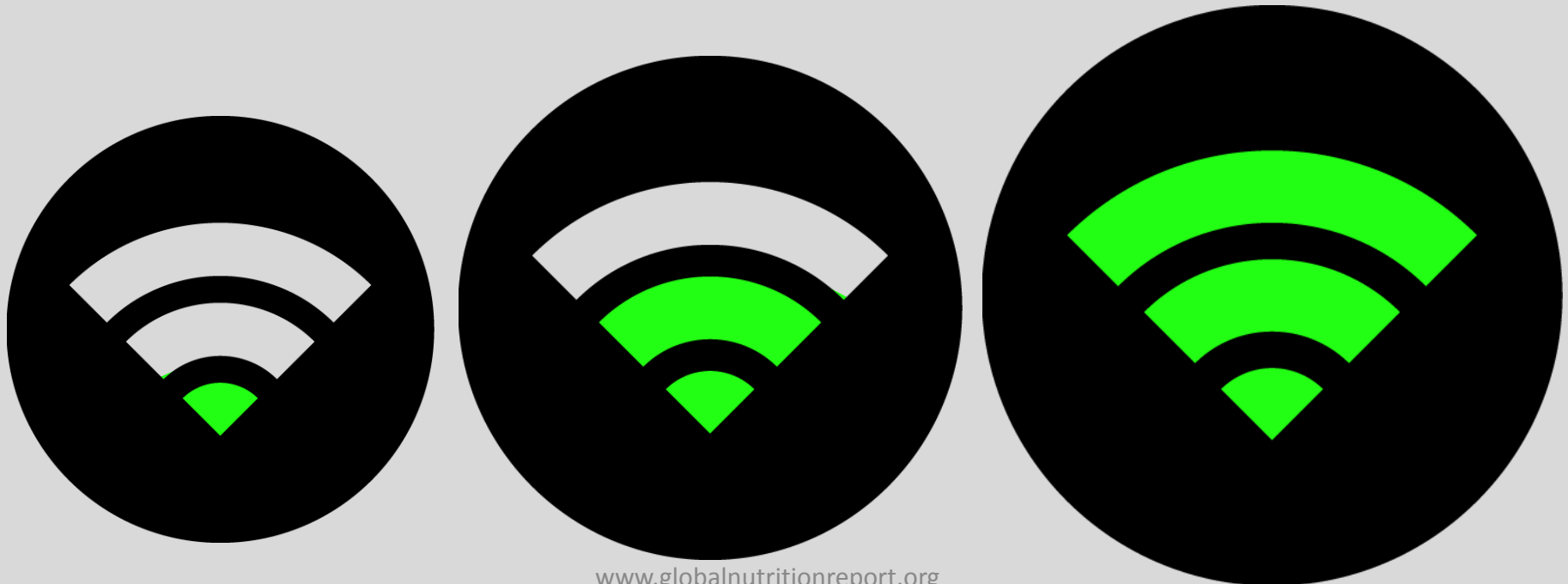
## **Exclusive breast feeding**

Burkina Faso, Georgia,  
Guinea, Guinea Bissau,  
Maldives, Mauritania

# New surveys contain promising data on stunting trends

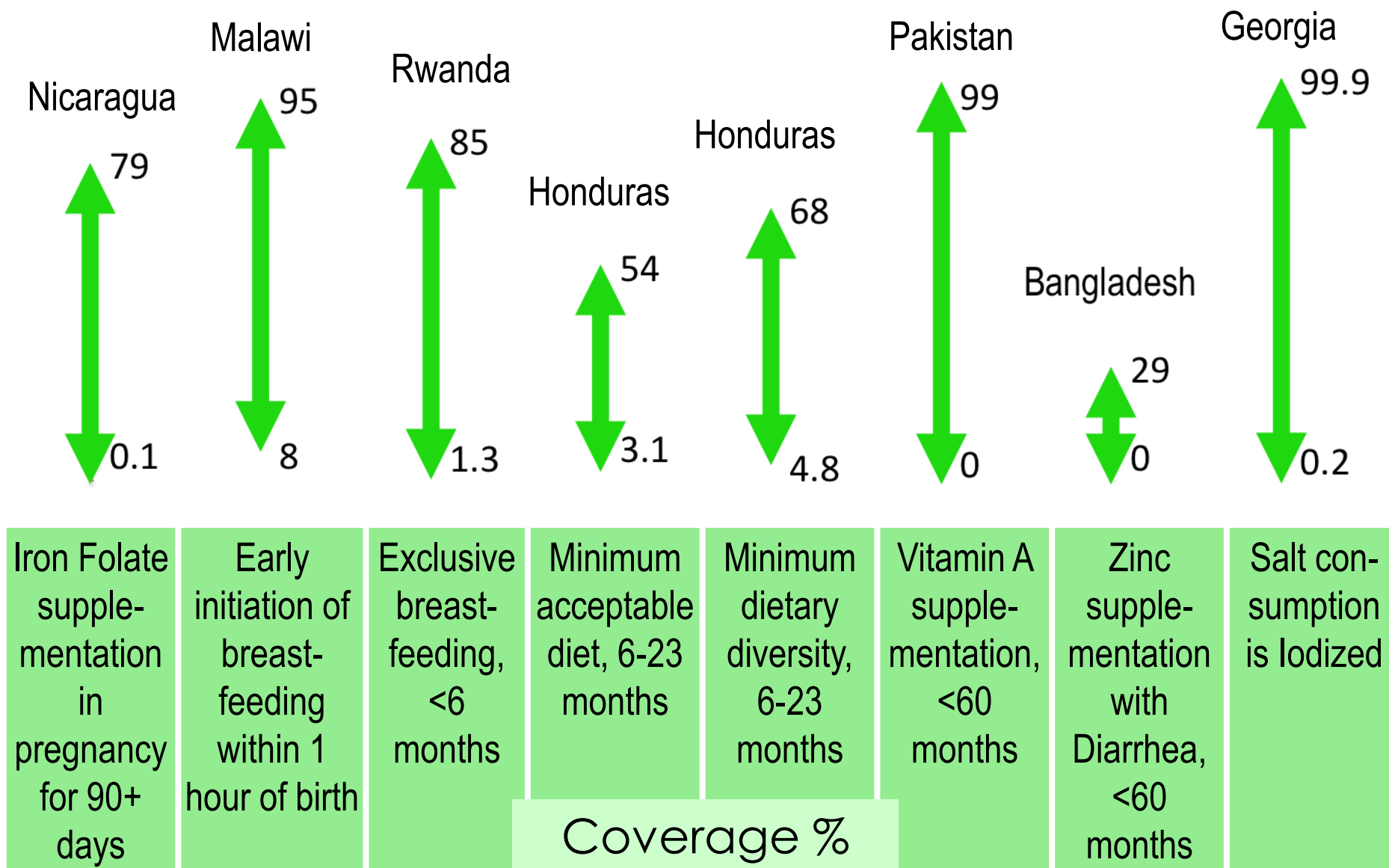


Nutrition  
programs need  
to be **scaled up**





# Scale Up is Possible



We need to hold  
ourselves to account

To pledge  
mittere : com-,  
**com • mit • ment**  
committing, esp.  
mittee. b. Official

# Nutrition budget commitments: untracked, **but not untrackable**

These countries have managed to track  
nutrition budget commitments

Guatemala



Tanzania



Zambia



Donor  
disbursements  
on nutrition  
have **increased**  
2010 → 2012

+ **30%** nutrition specific  
+ **19%** nutrition sensitive





# ...but from a very low base

Nutrition  
specific  
\$0.5 bn

Nutrition  
sensitive  
\$1 bn

overseas  
development  
assistance  
\$135 bn

2012 Disbursement  
Numbers



Strong accountability  
needs...

...empowered  
citizens

# Tools for social accountability

Participatory budgeting	Citizen report cards
Community score card	Social Audit



**Nutrition  
Data**





**49** % of countries don't have  
enough data to assess if on/off course  
for 4 WHA indicators

**40** % of most recent  
child growth surveys are  
over 5 years old

# Glaring Nutrition Data Gaps



# Recommended Actions

1. Embed nutrition more strongly in SDGs
2. Develop more ambitious 2030 targets
3. Embrace complexity of multiple burdens
4. Relentless focus on coverage of nutrition specific interventions
5. Find resources outside the health sector for nutrition sensitive interventions
6. Invest in a nutrition data revolution
7. Be accountability champions

The logo is a circular emblem. The top half is a dark grey semi-circle containing the word "GLOBAL" in white, bold, sans-serif capital letters. The bottom half is an orange semi-circle containing the words "NUTRITION" and "REPORT" in white, sans-serif capital letters, stacked vertically. A thin green line forms the outer border of the circle, and a white line separates the grey and orange sections.

# GLOBAL

Thank you

# NUTRITION REPORT